

LITETABLE

Laminate Colors



Frame Colors



Stackable Table

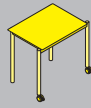
The **LiteTable-ST** is made from welded round steel legs with a rectangular steel top frame, all powder-coated. It's available in eight heights so each student can find their perfect fit, and the tables are easily stackable. The **LiteTable-ST** has uniquely-spaced table legs so the tables can be lined up against each other to form a continuous row without gaps in between.



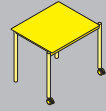
LiteTable-ST

LiteTable-ST

Stackable table.



21090
8 heights
w x d: 27 5/8 x 21 5/8

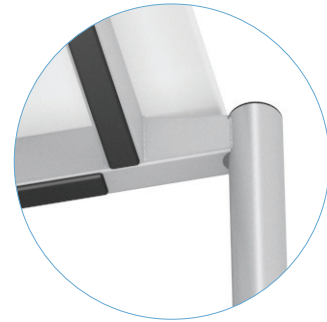


21091
8 heights
w x d: 29 1/2 x 25 5/8



Stackable

The **LiteTable-ST** is stackable up to 8 and is equipped with stack protection at the lower edge of the top frame. Up to four stacked tables may be moved together on castors.



Welded Frame

The **LiteTable-ST** has a frame made from welded steel, providing superior table strength and longevity.

Castors or Glides

The **LiteTable-ST** is available with three types of glides. 2-component universal glides are specifically designed by VS to protect hard floors, yet can be used on all floor types. Plastic glides are recommended for carpeted floors, and felt glides are another option for hard floors. Optionally with two castors at the outer legs.



2-Component



Plastic



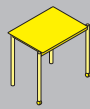
Felt

- 12" ○
- 15 3/4" ○
- 20 7/8" ●
- 23 1/4" ●
- 25 1/4" ●
- 28" ●
- 30" ●
- 32 3/8" ●

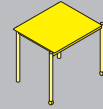
Available in 8 heights.

LiteTable-AL

Stackable lightweight table.



21018
8 heights
w x d: 27 5/8 x 21 5/8



21019
8 heights
w x d: 29 1/2 x 25 5/8

The Agile Classroom

The **LiteTable-AL** offers the ultimate flexibility for multi-use spaces and agile classrooms. Durable round aluminum inner and outer legs are designed for easy stacking and so the tables can be lined up against each other to form a continuous row without gaps in between.



Stackable

The **LiteTable-AL** is stackable up to 8 and is equipped with stack protection at the lower edge of the top frame. The aluminum frame and lightweight top allows for any age group to easily rearrange, stack, and move.

Castors or Glides

The **LiteTable-AL** is available with three types of glides. 2-component universal glides are specifically designed by VS to protect hard floors, yet can be used on all floor types. Plastic glides are recommended for carpeted floors, and felt glides are another option for hard floors. Optionally with two castors at the outer legs.



2-Component



Plastic



Felt

- 12" ○
- 15 3/4" ○
- 20 7/8" ●
- 23 1/4" ●
- 25 1/4" ●
- 28" ●
- 30" ●
- 32 3/8" ●

Available in 8 heights.

LiteTable-AL